

Aero Cell GTP - Minipleat Box filters in plastic frame

AERO CELL-GTP filters are the new generation type high efficiency mini-pleat box filters available in efficiencies F8 / MERV14, F9 / MERV15 & H10/MERV16. These filters are designed to use in Gas Turbine Systems, VAV systems and Oil Mist Collection. The compact design, larger surface area and low initial resistance made it an ideal alternative to ordinary Bag filters & Box type filters of the similar efficiencies. The high burst resistance, low pressure drop and high dust holding capacity offered by the filter made it an ideal filter for extreme operating conditions.

Aerofil Models

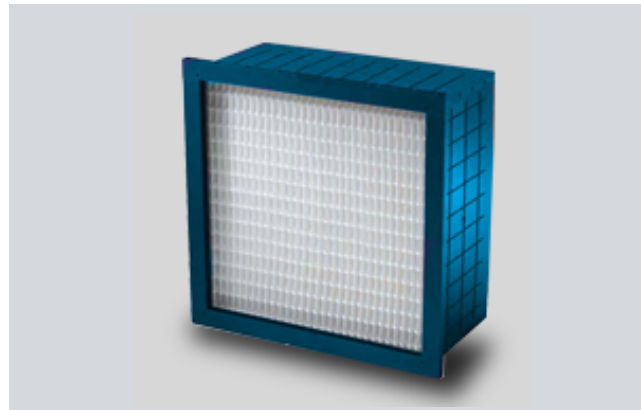
Aero Cell GTP

Mini pleat box style filters

Available in F8, F9 and H10 grades

Plastic frame with single, double or no header

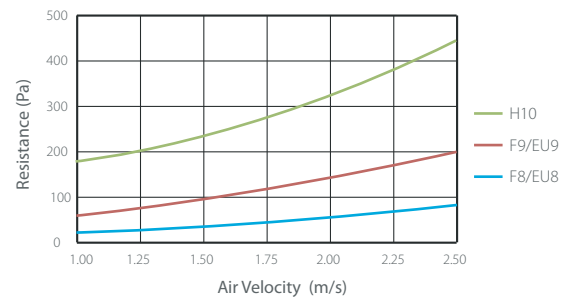
240mm deep minipleat pack used



MEDIA FEATURES AND TECHNICAL DETAILS

100% Synthetic or Fiberglass filter media made from a modified meltblown process having graded fiber density ensuring coarse fibers upstream and fine fibers downstream is closely pleated with thermo-plastic bead separators which gives a unique V configuration to the pleats & accommodates a very large quantity of filter media. The mini-pleated media packs are arranged in a perfect V design & sealed to the enclosing frame made up of plastic. All filters will have two plastic protection grids on both sides. Each filter offers a very large media area and very low initial pressure drop than the conventional Bag and Rigid box filters. Various options are available like filters with no frames, single header and double header constructions.

Airflow vs. Resistance



Selection Chart ▼

AHSRAE	EN 779	Model	Filter Size	Filter Size	Rated Airflow	Initial PD	Final PD
			(inches)	(mm)			
MERV14	F8	AVGTP8-44	24 x 24 x 12	592 x 592 x 292	3400 / 2000	0.35 / 90	1.5 / 380
MERV14	F8	AVGTP8-04	20 x 24 x 12	490 x 592 x 292	2800 / 1650	0.35 / 90	1.5 / 380
MERV14	F8	AVGTP8-00	20 x 20 x 12	490 x 490 x 292	2400 / 1400	0.35 / 90	1.5 / 380
MERV14	F8	AGTP8-24	12 x 24 x 12	292 x 592 x 292	1700 / 1000	0.35 / 90	1.5 / 380
MERV15	F9	AVGTP9-44	24 x 24 x 12	592 x 592 x 292	3400 / 2000	0.43 / 110	1.5 / 380
MERV15	F9	AVGTP9-04	20 x 24 x 12	490 x 592 x 292	2800 / 1650	0.43 / 110	1.5 / 380
MERV15	F9	AVGTP9-00	20 x 20 x 12	490 x 490 x 292	2400 / 1400	0.43 / 110	1.5 / 380
MERV15	F9	AVGTP9-24	12 x 24 x 12	292 x 592 x 292	1700 / 1000	0.43 / 110	1.5 / 380
MERV16	H10	AVGTP10-44	24 x 24 x 12	592 x 592 x 292	3400 / 2000	0.96 / 245	1.5 / 380
MERV16	H10	AVGTP10-04	20 x 24 x 12	490 x 592 x 292	2800 / 1650	0.96 / 245	1.5 / 380
MERV16	H10	AVGTP10-00	20 x 20 x 12	490 x 490 x 292	2400 / 1400	0.96 / 245	1.5 / 380
MERV16	H10	AVGTP10-24	12 x 24 x 12	292 x 592 x 292	1700 / 1000	0.96 / 245	1.5 / 380

● Burst Pressure - > 5000 Pa

● Maximum Operating Temperature / Humidity - 90 ° C / 90%

All data are average indicative values with usual manufacturing and testing tolerances. We reserve the right to modify performance data without prior notices due to the constant technical improvement.

© Copyright: Every effort has been made to ensure that the information contained in this publication is accurate at the time of publishing. We assume no responsibility or liability for typographical errors or omissions or for any misinterpretation of the information within the publication and reserves the right to change without notice.

