

Aero Flow - Deep Pleated Rigid Box Filters

AERO FLOW, medium to high efficiency extended surface deep pleated rigid box filters are manufactured from a new generation range of inherently anti-microbial, high lofted synthetic fiber filter media or micro - fine glass fiber filter media. It is capable of removing contaminants such as bacteria, fungi, fumes, smoke etc. from the air stream and is an ideal fine filter for HVAC systems installed in Hospitals, Laboratories, Food processing and Pharmaceutical units, Computer rooms, Optical and Electronic facilities, Airports Terminals, public buildings etc.

Aerofil Models

Aero Flow : AFPS

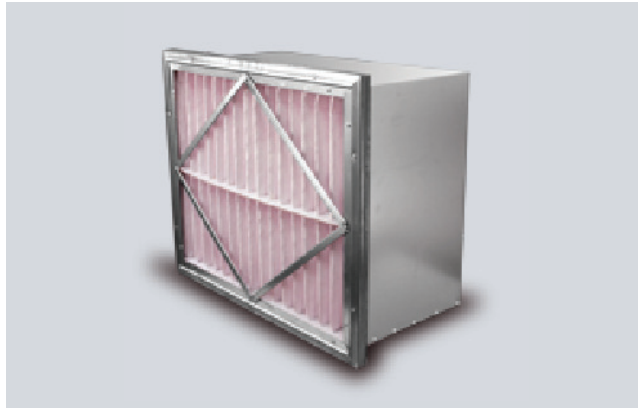
Deep pleated box type synthetic media filters

Aero Flow : AFPG

Deep pleated box type fiberglass media filters

Available in single, double or no header frames

M5 to F9 efficiencies



Media Features and Technical Details

AERO FLOW model AFPS is made up of superior grade synthetic media and AFPG with micro-fine glass fiber filter media. In both models, the filter media is laminated with an expanded metal mesh having 98% open area which provides adequate strength to the pleated media pack, supports the media and gives rigidity to the pleats. The three stage media arrangement which consist of coarse fibers upstream, micro - fine fibers downstream and scrim backing to prevent fiber migration, offers high dust holding capacity and filtration efficiency. AERO FLOW is designed for use in systems with variable air volumes and offers excellent filtration performance combined with high dust holding capacity and suitable for applications where highest degree of air cleanliness is required.

The aerodynamic filter design by radial V pleats with die-cut pleat stabilizers results in a rigid and stable filter offering consistent performance under various operating conditions. The deep pleated media pack is encased in a metal frame and all the four edges of media are properly bonded to the frame to ensure a leak free operation. AERO FLOW is available in all standard sizes, box style construction or with single / double header frames.

Selection Chart ▼

Filter Size (mm)	Airflow (CMH)		Initial Resistance to air flow (Pa) - Synthetic Media								Initial Resistance to air flow (Pa) - Fiberglass Media							
	M	H	95%/F8/MERV14		85%/F8/MERV13		65%/F6/MERV12		55%/F5/MERV9		95%/F8/MERV14		85%/F8/MERV13		65%/F6/MERV12		55%/F5/MERV9	
	@ 1.27 m/s	@ 2.54 m/s	Model : AFPS8	Model : AFPS7	Model : AFPS6	Model : AFPS5	Model : AFPS4	Model : AFPS3	Model : AFPS2	Model : AFPS1	Model : AFPG8	Model : AFPG7	Model : AFPG6	Model : AFPG5	Model : AFPG4	Model : AFPG3	Model : AFPG2	Model : AFPG1
592 x 592 x 292	1700	3400	71	147	38	99	28	66	18	51	74	163	61	127	30	76	20	56
292 x 592 x 292	850	1700	71	147	38	99	28	66	18	51	74	163	61	127	30	76	20	56
592 x 490 x 292	1450	2900	71	147	38	99	28	66	18	51	74	163	61	127	30	76	20	56
292 x 292 x 292	425	850	71	147	38	99	28	66	18	51	74	163	61	127	30	76	20	56
592 x 592 x 150	850	1700	61	122	30	64	23	41	13	30	61	124	36	97	25	56	15	30
292 x 592 x 150	425	850	61	122	30	64	23	41	13	30	61	124	36	97	25	56	15	30
592 x 490 x 150	800	1600	61	122	30	64	23	41	13	30	61	124	36	97	25	56	15	30
592 x 592 x 100	600	1200	51	104	41	81
292 x 592 x 100	300	600	51	104	41	81
592 x 490 x 100	500	950	51	104	41	81

● Recommended Final Resistance : 375 Pa

● Maximum Pressure Drop - 450 Pa

● Maximum Operating Temperature / Humidity - 80 ° C / 100%

All data are average indicative values with usual manufacturing and testing tolerances. We reserve the right to modify performance data without prior notices due to the constant technical improvement.

© Copyright: Every effort has been made to ensure that the information contained in this publication is accurate at the time of publishing. We assume no responsibility or liability for typographical errors or omissions or for any misinterpretation of the information within the publication and reserves the right to change without notice.

